

SHAPING
EMOTIONS
IN INTERIORS.



HOMAPAL

THINK DESIGN. THINK HOMAPAL.



HOMAPAL® a name synonymous with innovation spanning real metal, writable, magnetic & projection surfaces.

HOMAPAL specialty laminates 'made in Germany' focuses on high quality interior design products ideal for use in retail, hospitality, residential, education, offices - wherever interiors need to be refined with elegant or useable surfaces. They offer architects, planners, designers and joiners a broad range in applications.

Our range of real metal, magnetic, writable & projection surfaces are continuously developed and adapted in line with the latest market trends. Thanks to our diverse ranges and broad spectrum of colours and decors, our solutions offer an almost unlimited scope for creativity and customisation.

The HOMAPAL range is more than just a laminate, it is shaping emotions in interiors.

NEW HOMAPAL SRM

Scratch Resistant Matt

The difference is even obvious to the naked eye.

The innovative scratch resistant matt (SRM) laminates with anti-fingerprint finish, combines luxury with functionality in our newest range release.

Encompassing decors in various textures and colours, such as bronze and champagne, we

select only the best aluminium, copper and brass to produce the SRM range. Using a special technique, HOMAPAL creates an ultra matt look with an anti-fingerprint function. The process produces a hard-wearing scratch resistant surface while fashioning decors that create a unique impression of depth and richness.

Use our new SRM range to enhance functionality while allowing your interiors to look extraordinary.

HOMAPAL SRM laminates are for vertical and selected low wear horizontal interior application only.



325 SRM
Brushed Champagne



451 SRM
Brushed Bronze



456 SRM
Brushed Medium Bronze



431 SRM
Cross Brushed Aluminium

HOMAPAL RM

Real Metal

Inject opulence and richness with real metal interior surfaces.

Vibrant and warm or cool and glossy, HOMAPAL's real metal (RM) laminates stand apart visually and always captivates its audience.

The HOMAPAL real metal collection features decors that range in look from classic to modern,

from strong to delicate and fine, while keeping the same standard of quality. Using thinly rolled foils of real aluminium, copper, brass and stainless steel, a special embossing technique gives the surfaces their unique texturing. Together with the diverse range of colours and stunning lustres, these real metals come with a feel that is truly exceptional, an unbeatable combination and hard to imitate.

HOMAPAL RM laminates are for vertical interior application only.



442 RM
Brushed Selenio Gold



447 RM
Brushed Selenio Copper



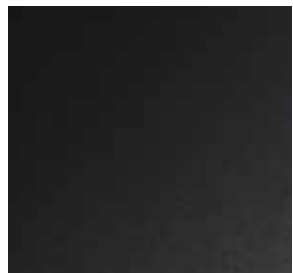
456 RM
Brushed Selenio Champagne



794 RM
Brushed Selenio Brass



451 (429/000) RM
Brushed Selenio Bronze



448 RM
Brushed Selenio Black



471 RM
Mirror Spiegel Gold



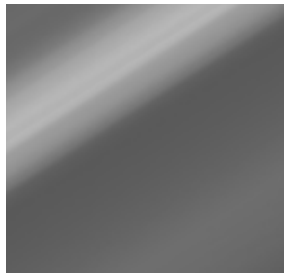
477 RM
Mirror Spiegel Copper



473 RM
Mirror Spiegel Tea - NEW



470 RM
Mirror Spiegel Silver



474 RM
Mirror Spiegel Smokey Grey

HOMAPAL MW

Magnetic & Writable

The perfect symbiose of performance and design.

HOMAPAL magnetic & writable (MW) laminates combine the ability to function as a shop fit out system or office information sharing surface (whether written or magnetised) the ideas are endless. HOMAPAL MW surfaces make the ideal choice where flexibility is needed for affixing items yet with the ability to redesign whenever needed or add written information and then remove without a trace.

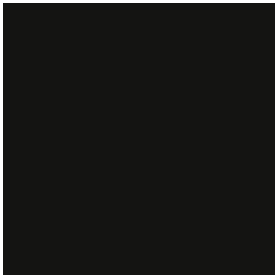
To create the magnetic surfaces iron foil is integrated into the laminate, creating an extremely

high magnetic holding surface. Hold large documents, plans, drawings, heavier magnetic racks or modular rail systems and storage. Used extensively in shop fitouts, visual merchandising, education, healthcare and any workplace.

Our gloss finished decors in the magnetic range also make up our writable surfaces. By using standard (non permanent) board markers they can be written on and wiped clean. The black matt surface is commonly used in schools and hospitality as it can be written on with chalk, inspiring creativity with practical use.

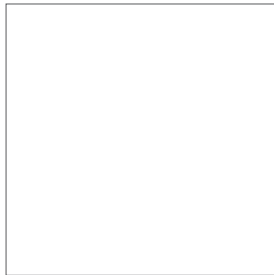
Magnetic & Writable surfaces opens up a wealth of applications.

HOMAPAL MW laminates are for vertical interior application only.



8205 MW

Black Matt Chalk - Magnetic



8206 MW

White Gloss - Magnetic



8208 MW

Grey Gloss - Magnetic

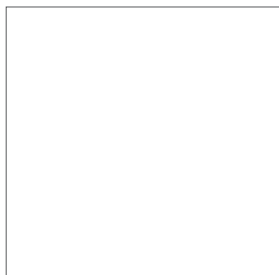
HOMAPAL PMW

Panel - Magnetic & Writable

Now the diverse magnetic & writable laminate is produced in a HPL (high pressure laminate) panel.

Encompassing the same properties, HOMAPAL's magnetic & writable surfaces are also produced as a panel (PMW). Made with an EO (zero emissions) MR MDF substrate, the sheets come in two sizes. Each PMW panel is single sided with a white 1mm liner.

HOMAPAL PMW laminates are for horizontal & vertical interior application.



8206 PMW

White Gloss Magnetic -
White 1mm Liner S/S Panel
MR MDF EO - 18mm



HOMAPAL PRM

Projection & Magnetic Only

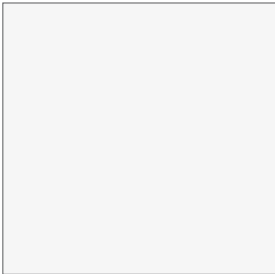
Triple your functionality within the large or small scale education or corporate interior design.

Use our projection and magnetic (PRM) laminate as a vertical wall within any room that also has projection and magnetic capabilities.

The matt white surface minimises reflection making the projected image easier to read from any angle.

Working from home would be easy with the use of the magnetic features while entertaining the family allows dual purpose and fun.

HOMAPAL PRM laminates are for projection and magnetic use only. Not to be used as a writable surface.



8207 PRM

White Matt – Projection & Magnetic surface only





LIMITLESS, BE INSPIRED



RANGE*	CODE	DECORS/FINISHES	SHEET SIZE	
NEW SRM	034332	HOMAPAL Brushed Champagne 325	3050 x 1220mm	1.0mm
NEW SRM	034334	HOMAPAL Brushed Medium Bronze 456	3050 x 1220mm	1.0mm
NEW SRM	034335	HOMAPAL Brushed Bronze 451	3050 x 1220mm	1.0mm
NEW SRM	034337	HOMAPAL Cross Brushed Aluminium 431	3050 x 1220mm	1.0mm
RM	019635	HOMAPAL Brushed Selenio Black 448	3050 x 1220mm	1.0mm
RM	022349	HOMAPAL Brushed Selenio Brass 794	3050 x 1220mm	1.0mm
RM	023965	HOMAPAL Brushed Selenio Bronze 451 (429/000)	3050 x 1220mm	1.0mm
RM	022335	HOMAPAL Brushed Selenio Champagne 456	3050 x 1220mm	1.0mm
RM	002629	HOMAPAL Brushed Selenio Copper 447	3050 x 1220mm	1.0mm
RM	018939	HOMAPAL Brushed Selenio Gold 442	3050 x 1220mm	1.0mm
RM	019644	HOMAPAL Mirror Spiegel Copper 477	3050 x 1220mm	1.0mm
RM	002913	HOMAPAL Mirror Spiegel Gold 471	3050 x 1220mm	1.0mm
RM	002904	HOMAPAL Mirror Spiegel Silver 470	3050 x 1220mm	1.0mm
RM	005960	HOMAPAL Mirror Spiegel Smokey Grey 474	3050 x 1220mm	1.0mm
NEW RM	034338	HOMAPAL Mirror Spiegel Tea 473	3050 x 1220mm	1.0mm
MW	019645	HOMAPAL Black Magnetic Matt Chalk 8205	3050 x 1220mm	1.0mm
MW	015967	HOMAPAL Grey Magnetic Gloss 8208	3050 x 1220mm	1.0mm
MW	004615	HOMAPAL White Magnetic Gloss 8206	3050 x 1220mm	1.0mm
MW	018977	HOMAPAL White Magnetic Gloss 8206	2440 x 1220mm	1.0mm
PMW	031301	HOMAPAL White Gloss Magnetic 8206/White 1mm Liner S/S Panel MR MDF EO	2400 x 1200mm	1.8cm
PMW	031302	HOMAPAL White Gloss Magnetic 8206/White 1mm Liner S/S Panel MR MDF EO	3000 x 1200mm	1.8cm
PRM	029974	HOMAPAL White Magnetic Matt Projection Surface ONLY 8207	3050 x 1220mm	1.0mm

*SRM - Scratch Resistant Matt. RM - Real Metal. MW - Magnetic & Writable. PMW - 18mm Panel Magnetic & Writable. PRM - Projection only & Magnetic

TECHNICAL OVERVIEW*

Warranty: The HOMAPAL SRM, RM, MW & PRM portfolio distributed by HVG Decorative Building Products receives a 15-year warranty. HOMAPAL PMW has a 10-year warranty.

Care & Maintenance: HOMAPAL RM & SRM laminates are easy to clean with soapy water and a microfibre cloth is recommended. Highly alkaline, highly acidic as well as cleaning products containing scouring agents must not be used. Do not use any solvent-based cleaning products.

HOMAPAL MW laminate and panel is suitable for use as writing display panels in conjunction with "Dry Wipe", or "Liquid Chalk" markers. All markers must be Xylene free. Do not use solvent-based markers under any circumstances. Only use soft microfiber cloths to wipe off the marker ink and clean panels weekly as a minimum. Under no circumstances must moisturising cleansers, such as dish washing detergents, be used.

HOMAPAL PRM 8207 is not suitable as a writable surface, it is a Projection & Magnetic Surface Only.

Hygiene: HOMAPAL RM, SRM, MW & PRM laminates have a sealed and hygienic surface. The laminate is a cured and therefore inert thermosetting plastic with a metal foil. There are no migrations that affect food and therefore, contact with food is harmless.

Processing & Use: HOMAPAL laminates can be sawn, milled and drilled in the same way as all standard laminates (HPL) using carbide-tipped cutting tools. HOMAPAL laminates can be bonded to conventional base materials with standard glues and adhesives used for normal HPL (do not use urea adhesives). HOMAPAL Magnetic laminates require special processing techniques, details available at www.hvgbuilding.com.au.

Thickness & Temperature: 0.8 – 1.3mm (laminate) depending on the production technique. Resistance to temperature: from 40°C to a max. of 80°C, depending on the décor. Use in rooms exposed to moisture is not recommended.

Decor Images: The decor colours are representations only, contact us on **1300 854 166** to order your free samples for that perfect colour match.

*This excerpt from the set of technical information is intended for guidance only. Detailed technical information on the various products is available at www.hvgbuilding.com.au or www.homapal.com.

SYDNEY

29 Henderson Street,
Turrella, NSW 2205
1300 854 166
(02) 9556 6000

BRISBANE

128-132 Mica Street,
Carole Park, QLD 4300
1300 854 166
(07) 3718 2300

PERTH

72 Bushland Ridge,
Bibra Lake, WA 6163
1300 854 166
(08) 9494 0100

ADELAIDE

57 Barnes Avenue,
Marleston, SA 5033
1300 854 166
(08) 8113 6000

MELBOURNE

25 West Park Drive,
Derrimut, VIC 3026
1300 854 166
(03) 9394 3100



1300 854 166
hvgbuilding.com.au

HOMAPAL® is distributed exclusively by
HVG Building Pty Ltd ABN 55 649 379 993
ACN 649 379 993.

For locations, inspiration and more information please
contact us on 1300 854 166 or building@hvg.net.au.

Follow us and we can showcase your work!

